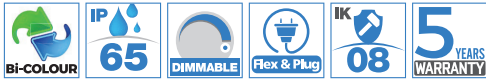


KINGSTON 600 GHB600

MULTIFUNCTIONAL LED HIGH BAY

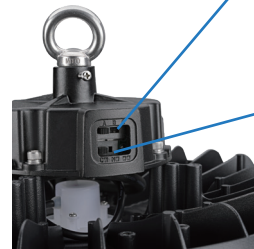


FEATURES

- Die-cast aluminium body
- Black powder coated finish
- Polycarbonate optical lens
- High luminous efficiency, 150 lm/W
- Plug and play sensor available on request
- Three power setting with DIP switch on the driver
- Power factor: 0.9
- Bridgelux LED chips
- Unique chimney theory for good heat dissipation
- Pre-wired 0-10V dimming cable
- LED lifespan: 100000 hours @ L80 B10, Ta 25°C
- Ta: -25°C to +50°C

POWER SELECTABLE

A	B	C
240W	200W	150W



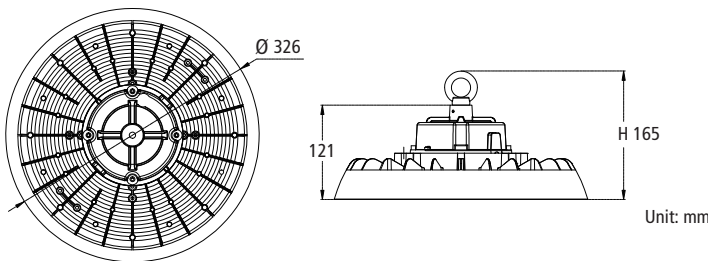
DIP SWITCH

Select colour temperature with DIP switch

4000K <-> 5000K

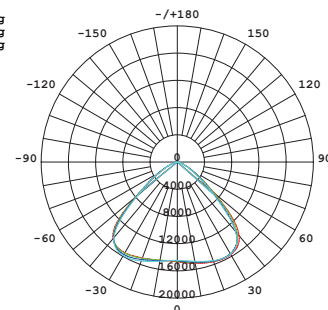
Factory setting @ 200W/5000K

DIMENSIONS



PHOTOMETRIC DATA

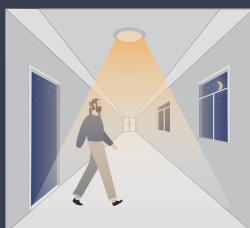
— C0/180, 89.0deg
 — C30/210, 90.3deg
 — C60/240, 94.2deg
 — C90/270, 94.6deg
 UNIT: cd



TECHNICAL SPECIFICATIONS

MODEL NO.	INPUT VOLTAGE (V)	POWER (W)	LUMEN (lm)	COLOUR TEMPERATURE (K)	CRI	BEAM ANGLE (°)	NET WEIGHT (kg)	FITTING COLOUR
GHB600/240 BC	110-277	150/200/240	22500/30000/36000	4000/5000	>80	110	2.5	Black

Sensor functions



Light will activate when motion is detected



When no motion is detected the light output will remain unchanged for 5 minutes



After 5 minutes the light will revert to standby mode and will dim down to 30%



If there is no motion being detected for 30 min, the light will automatically turn off

OPTIONS

Plug-and-Play PIR Sensor



GHB600/PIR SENSOR



Plug-and-Play Microwave Sensor



GHB600/MOTION SENSOR



PIR sensor remote controller



GHB600/PIR SENSOR REMOTE CONTROLLER

Motion sensor remote controller



GHB600/MOTION SENSOR REMOTE CONTROLLER

Anti-glare reflector



GHB600/ALUMINIUM REFLECTOR

PC reflector



GHB600/PC REFLECTOR

Ceiling mount adjustable bracket (±112.5°)



GHB600/SURFACE MOUNTED BRACKET