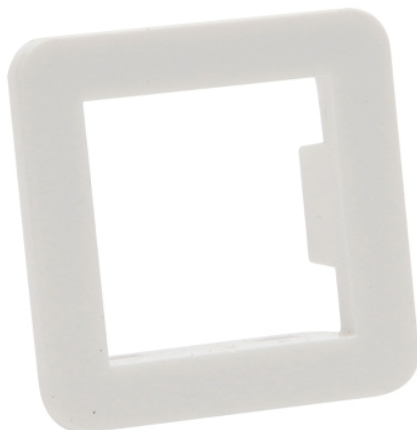


## Product data sheet

### Characteristics

# PDL611MWH

## Adapter Clip



### Main

Range of product	600 Series
Product or component type	Data jack adaptor

### Complementary

Fixing mode	By clips
Product compatibility	LexCom modular jack
Material	PC (polycarbonate)
Colour tint	White
Surface finish	Gloss
Installation direction	Vertical Horizontal
Width	23 mm
Height	23 mm
Depth	10 mm
Mounting mode	Front
Ambient air temperature for operation	-10...40 °C
Quantity per set	Set of 100
Type of packing	Carton

### Packing Units

Unit Type of Package 1	PCE
Number of Units in Package 1	1
Package 1 Height	1.3 cm
Package 1 Width	2.5 cm
Package 1 Length	2.5 cm
Package 1 Weight	1.46 g
Unit Type of Package 2	BB1
Number of Units in Package 2	100
Package 2 Height	7.7 cm
Package 2 Width	12 cm
Package 2 Length	19.5 cm
Package 2 Weight	146 g
Unit Type of Package 3	CAR
Number of Units in Package 3	300
Package 3 Height	7.5 cm
Package 3 Width	19 cm

Package 3 Length	44 cm
Package 3 Weight	438 g

### Offer Sustainability

Sustainable offer status	Green Premium product
REACH Regulation	<a href="#">REACH Declaration</a>
EU RoHS Directive	Compliant <a href="#">EU RoHS Declaration</a>
Mercury free	Yes
RoHS exemption information	<a href="#">Yes</a>
China RoHS Regulation	<a href="#">China RoHS Declaration</a>
Environmental Disclosure	<a href="#">Product Environmental Profile</a>